

## LOCATOR FOR CHECKING PIPING AND CHANNEL SYSTEMS

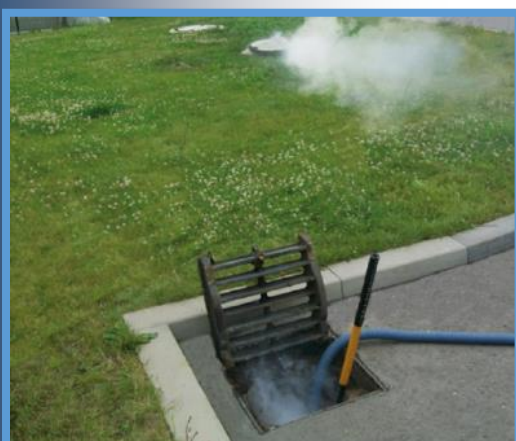


**DRAGON** - locator developed by *KanRo Ltd®* is especially useful for professional use for checking pipelines and sewage systems and tanks for leaks and incorrect connections. It is also helpful in searching for cavities, undercuts in embankments and shaft constructions or for checking flat roofs. Another possible application of this device is the simulation of a fire in the case of rescue exercises and training tasks of the fire brigade, as well as examining the distribution of smoke in buildings.

### CHARACTERISTIC

- ✓ Ergonomic and compact design, weight approx. 7,5 kg
- ✓ Simple and safe operation
- ✓ Integrated fan with 3-step operation:  
fog, fog + blower, blower
- ✓ Infinitely variable speed control  
of the blower
- ✓ On / off switch
- ✓ Ready to work after approx. 3-5 min.
- ✓ High efficiency and constant smoke  
density
- ✓ The hypertensive safety system
- ✓ Very low fluid consumption





## SPECIFICATION

Continuous operation of the device	about 60 minutes *
The efficiency of smoke	about 2.800 m / min. *
Fluid consumption	approx. 16 ml / minute *
The power of the heating device	800 W
Blower power - turbine engine	1400 W
The capacity of the liquid reservoir	1 liter
The weight of the dry device	about 7.5 kg
dimensions	41 x 21 x 18 cm (L x W x H)
Power	230 V / 50-60 Hz (10 A)
* using the liquid smoke DRAGON FLUID - HEAVY SMOKE	

## EQUIPMENT

- ✓ Flexible PVC hose with a reinforced spiral DN50 with connector C, length 5 m
- ✓ Aluminium telescopic rod with 3,85 m length
- ✓ Radio remote with transmitter and receiver (optional)
- ✓ Supply voltage 230 V / 50-60 Hz, with a 1,5 m long cable
- ✓ Protective cover for telescopic rod, power cable and radio
- ✓ Original smoke liquid "DRAGON FLUID - HEAVY SMOKE" - 5 liters:
  - completely odorless
  - completely biodegradable
  - harmless to health
  - non-flammable and completely free from oils and fats
  - ready to use immediately